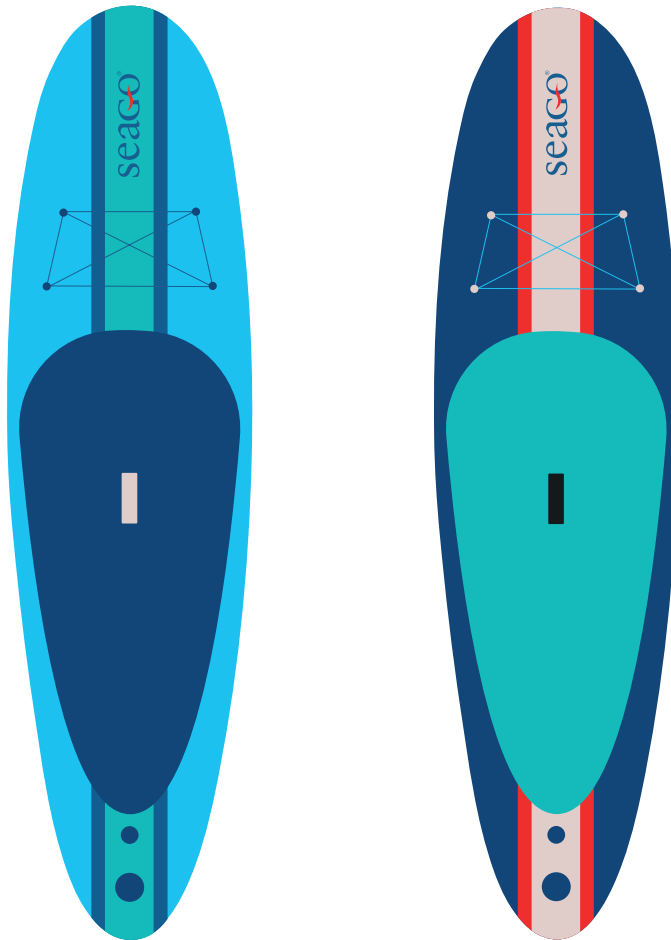


# seago<sup>®</sup>

## 10'6" STAND UP PADDLE BOARD INSTRUCTION MANUAL



### INFLATABLE PADDLE BOARD

**Thank you for purchasing a Seago paddle board.**

In order to get the best out of your new Seago product you must read and fully understand this user manual.

We hope you enjoy your new paddle board.

*Team Seago*

## **CONTENT**

### **3 - RELEASE AND WAIVER OF CLAIMS**

### **4 - WARRANTY & SAFETY**

### **5 - SETUP**

### **6 - ASSEMBLY & CARRYING**

### **7 - ON THE WATER, DISASSEMBLY & SUP PROTECTION AND STORAGE**

#### **RELEASE AND WAIVER OF CLAIMS**

You hereby agree that you have read and understood the whole user manual of this Seago product including all instructions and warning notices, before using this product. Furthermore you agree to undertake to make sure that any third party (who receives the product from you for a certain or unlimited period of time) has read and understood all instructions and warning notices contained in this user manual before you permit the use of this Seago product. In consideration of the sale of this Seago product to you, you hereby agree to the fullest extent permitted by law, as follows: To waive any and all claims that you have or may in the future have against Seago Yachting Ltd. and all related parties resulting from the use of this Seago product and any of its components. To release Seago Yachting Ltd. and all related parties from any and all liability for any loss, damage, injury, or expense that you or any users of your Seago product may suffer, or that your next of kin may suffer, as a result of the use of this Seago product, due to any cause whatsoever, including negligence or breach of contract on the part of Seago Yachting Ltd. and all related parties in the design or manufacture of this Seago product and any of its components. In the event of your death or incapacity, all provisions contained herein shall be effective and binding upon your heirs, next of kin, executors, administrators, and representatives. Seago Yachting Ltd. related parties have not made and expressly deny any oral or written representations other than what is set forth herein and the Seago product user manual.

#### **STAND UP PADDLE BOARDING CAN BE DANGEROUS.**

Get professional instructions before you go stand up paddle boarding! Always be extremely careful when using this product. Only use this product if you are in good physical and mental shape. Due to safety precautions stand up paddle boards should only be used on and above water surfaces. While using this product you're responsible for your own as well as others wellbeing. Never go stand up paddle boarding if you are not familiar with the area and surroundings. Never go paddling in strong or offshore winds. Never go paddling on an outgoing tide or strong tidal currents.

#### **ASSUMPTION OF RISK**

Use of this Seago product and any of its components involves certain inherent risks, dangers and hazards that can result in serious personal injury and death to both the user and to third parties. By using this Seago product, you freely agree to assume and accept any and all known and unknown and uncertain risks of injury to you and to third parties while using the equipment. The risks inherent in this sport can be greatly reduced by abiding to the warning guidelines listed in this owner manual and with common sense.

## WARRANTY

Seago Yachting Ltd. warrants this product to be free of major defects in material or workmanship to the original purchaser for a period of twelve months from the date of purchase. Should any damages be identified within this twelve month period, which are attributable to defects in material and/or workmanship Seago Yachting Ltd. will repair or alternatively replace the damaged component(s). This warranty is a personal warranty to you. The warranty is therefore not transferable and does not cover products used in rental or teaching operations.

To claim your warranty you will need to present your receipt of purchase. The name of the retailer and date of purchase must be clear and legible. This warranty will naturally only be applicable if your product is used for stand up paddle boarding on water. Seago Yachting Ltd. will make the final warranty determination, which may require inspection and/or photos of the equipment, which clearly show the defect(s). If necessary, this information must be sent to the Seago Yachting Ltd. distributor in your country, postage prepaid. If a product is deemed to be defective by Seago Yachting Ltd. The warranty covers the repair or replacement of the defective product only. Seago Yachting Ltd. will not be responsible for any other costs, losses or damages incurred as a result of any defect and/or use of this product.

The warranty does not cover damage caused by misuse, abuse, neglect or normal wear and tear including but not limited to, rigging with other than Seago components, damage due to excessive inflation of the stand up paddle board, damage caused by use in the waves or shore break and damage caused by anything other than defect in material and workmanship. This warranty is voided if any unauthorised repair, change or modification has been made to any part of the equipment. For products repaired or replaced by Seago Yachting Ltd. the warranty period is determined from the original date of purchase.

## SAFETY

- Only use the paddle board if you are in good physical condition, have good swimming skills and are equipped with a safety vest and a helmet.
- Before using this product, you should attend a course or attend a certified school or alternatively be adequately instructed by an experienced professional.
- Never paddle alone, only paddle with an experienced paddle partner who has local knowledge.
- Stay up to date about current and future weather conditions, including potentially dangerous conditions. Never go paddling in strong or offshore winds. Never go paddling on an outgoing tide or strong tidal currents.
- Never use the paddle board near boat traffic, other vessels, weirs, sluices and any other hazard.
- Never use the paddle board in situations where you could hurt others, e.g. bathers and swimmers at the beach.

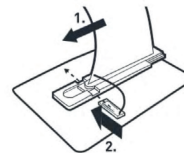
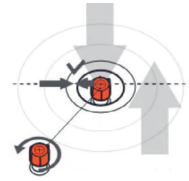
## SETUP

- 1 - MAIN VALVE
- 2 - LUGGAGE STRAPS
- 3 - HANDLE
- 4 - EVA DECKPAD
- 5 - RAISED FOOT PAD
- 6 - FIN SLOT
- 7 - FIN
- 8 - LEASH ANCHOR POINT
- 9 - 3 PIECE PADDLE
- 10 - BAG & PUMP



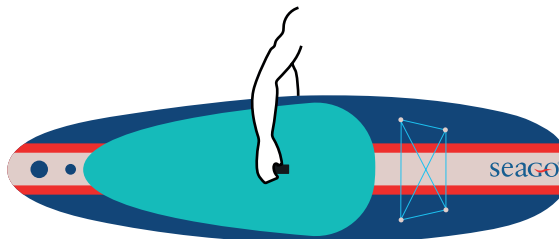
## ASSEMBLY

1. When rolling out the paddle board ensure that there are no sharp or hot objects on the ground.
2. Ensure that the non-return valve is closed. For this purpose, the red pin, in the upper position, should be at the height of the grey ring. If this is not the case, turn the red pin 90 degrees counter-clockwise.
3. Check whether the valve is free from particles or obstructions.
4. Connect the hose, from the supplied pump including sealing ring (black), to the valve and let it snap into place by turning the pump connection clockwise.
5. Pump up your paddle board with the included hand pump to 12-16 psi. Optionally, a suitable electric pump can be used.  
**WARNING: Do not use any air compressor.**  
**Never exceed the maximum pressure of 16 psi.**
6. Close the valve cover. Ensure the valve cover is tight.
7. Slide the fin into the mounting rail and secure it with the pin.



## CARRYING

1. The carrying handle allows you to carry the inflated paddle board easily: The easiest way to carry the board is sideways under your arm



2. Always keep the fins pointing towards your body; be especially careful not to hurt anyone with the board in windy conditions.

## ON THE WATER

1. The standard standing position is with your feet in the direction you are travelling and at the height of the transport handle.
2. Hold the paddle as shown.
3. Holding your balance is like riding a bicycle: The more speed you have, the more stable the board becomes.

## DISASSEMBLY

1. Demount the fins.
2. Clean your paddle board with fresh water (where possible).
3. Open the valve cover and turn the red pin 90 degrees clockwise, so that it is in the lowered position and the air can flow out.
4. Roll your paddle board from the side opposite the valve with the deck on the inside of you and, conversely, the fins on the outside.
5. Using the black strap wrap it around the paddle board and clip together. Pull the end of the strap to tighten, this will hold the folded paddle board together for packing.
6. Affix the paddle board, before packing, with the supplied strap, so that it can be easily packed into the SUP bag and easily unpacked.



## SUP PROTECTION AND STORAGE

The ideal storage location is dry and unfolded in a cool, dry place with a small amount of air in the paddle board. If space is limited, store the paddle board loosely rolled with the valve open. In addition the paddle board should be stored away from dirt and sharp objects. Seago paddle boards are of the highest quality and very durable, but at the very least avoid the following situation:

- Contact with sharp, hot or dirty objects.
- Your paddle board in the sun for an unnecessarily long time.

**IT'S TIME TO REGISTER YOUR NEW PADDLE BOARD**

[WWW.SEAGOYACHTING.CO.UK/REGISTER](http://WWW.SEAGOYACHTING.CO.UK/REGISTER)

**NOW YOU HAVE READ THE MANUAL YOU ARE READY TO HAVE FUN.**

**IT'S TIME TO GET ON THE WATER!**

# seago<sup>®</sup>

Equip for *Adventure*

Deanland Business Park | Golden Cross | East Sussex | BN27 3RP

[www.seagoyachting.co.uk](http://www.seagoyachting.co.uk)