

# WEATHER STATIONS

## ATLANTIC EMT

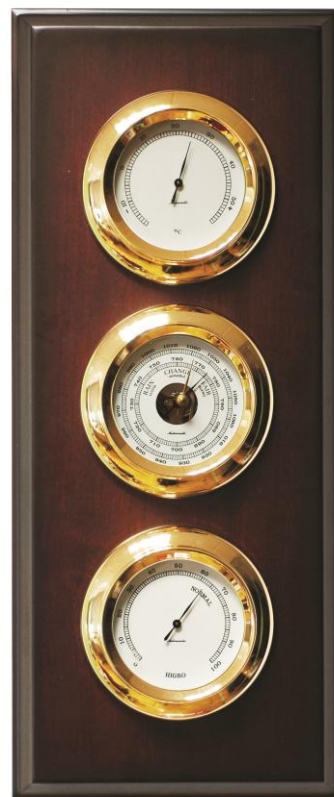
## 95 SERIES

### Size

- Base: 95 mm
- Dial: 70 mm
- Depth: 35 mm
- Plinth Size: 443 x 185 mm

### Technical Characteristics

- Vertical plinth mounted for use complete with thermometer, barometer and hygrometer.
- Mineral glass.
- Instrument finish: 24 karat gold plated brass.



RINA  
150 YEARS

AUTONAUTIC INSTRUMENTAL, S.L.  
Italia, 1  
08320 EL MASNOU  
SPAIN  
PH: +34.93.540.9949  
info@autonauticinstrumental.com  
www.autonauticinstrumental.com

